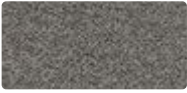


**GABRIEL**  
**MICA**  
Category P1



**APPLICATION**

Cross functional contract

**COMPOSITION**

97% post-consumer recycled polyester,  
3% polyester

**WIDTH**

2496 light/2497 dark:  
140 cm  
2500 light/2501 dark:  
170 cm

**WEIGHT**

2496 light/2497 dark:  
305 g/lm.  
2500 light/2501 dark:  
370 g/lm.

**FLAME RESISTANCE**

CAT B 117-2013  
ASTM E 84 Class I  
BS EN 1021-1 Cigarette  
BS EN 1021-2 Match  
BS 476 Part 7 class I

**ABRASION RESISTANCE**

60,000 Martindale cycles

**FASTNESS TO RUBBING**

Wet: 4-5, Dry: 4-5  
(ISO 105 - X12)

**LIGHT FASTNESS**

5-8 (ISO 105 - B02)

