

NOTE! Always mount with at least 2 persons! Also leave the protective sleeve on the tube.

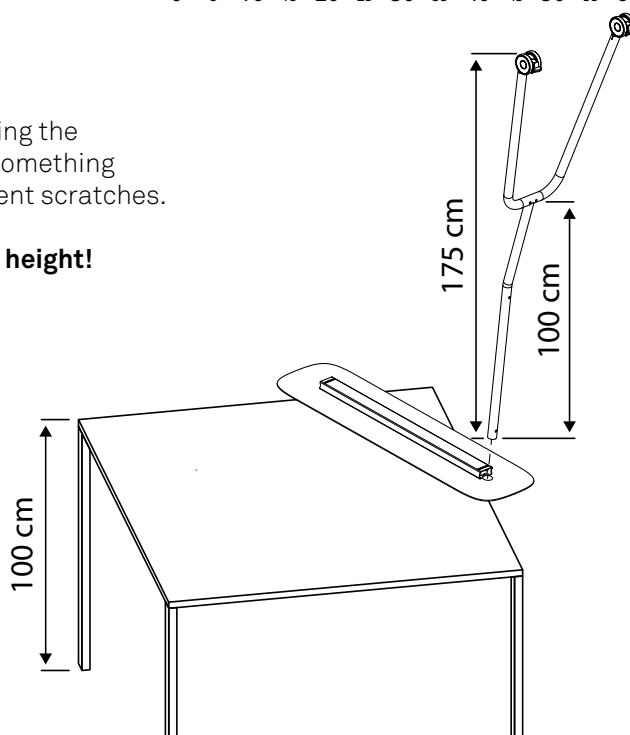
Make sure there is enough space underneath the shelf!

approximately 100cm

Also, keep in mind that the leg itself is 175cm high, meaning you need a minimum **ceiling height of 275cm**.

CAUTION before placing the shelf on a table, put something underneath it to prevent scratches.

Be aware of the total height!

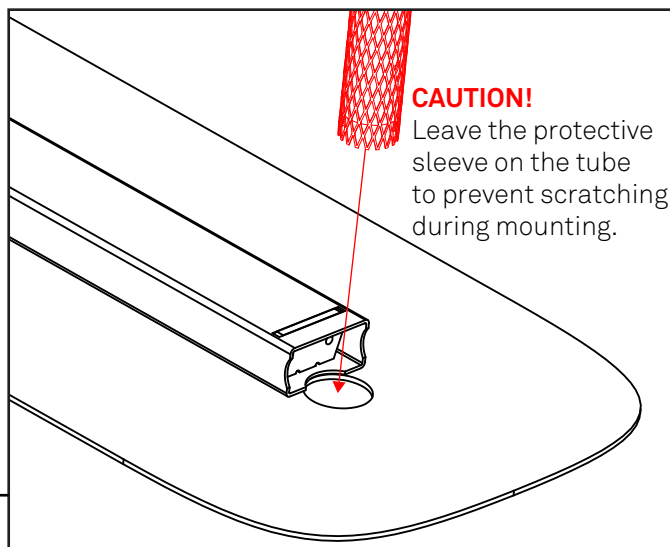
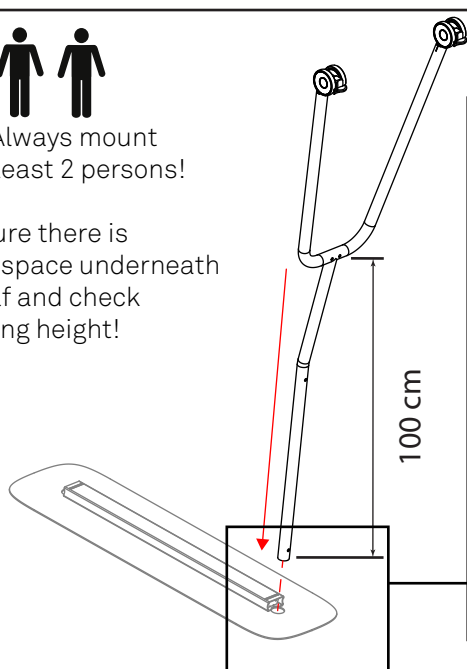


1



NOTE! Always mount with at least 2 persons!

Make sure there is enough space underneath the shelf and check the ceiling height!



CAUTION!

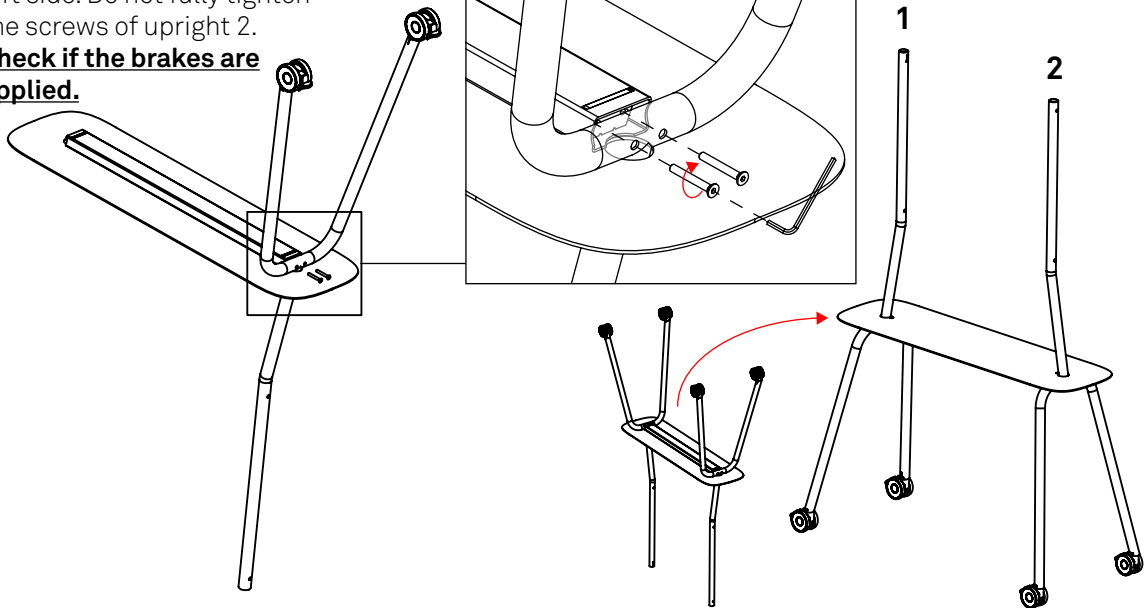
Leave the protective sleeve on the tube to prevent scratching during mounting.

2

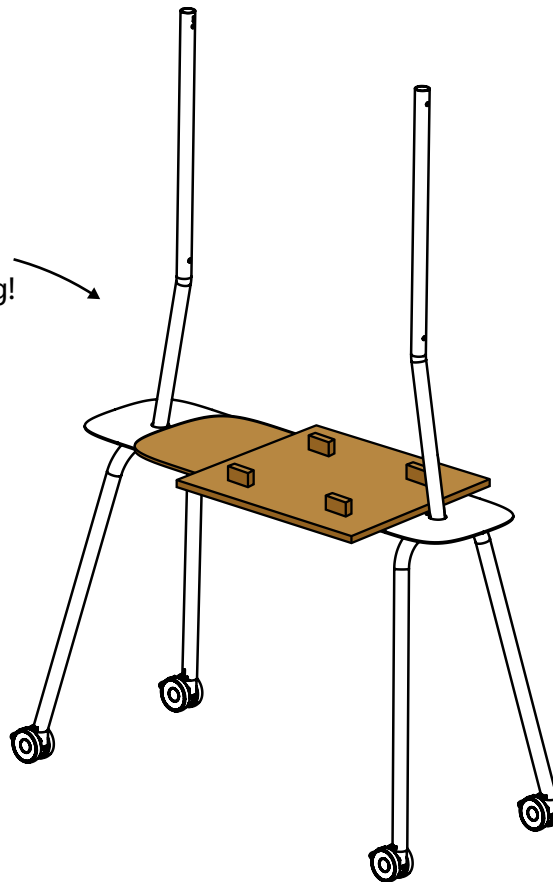
Repeat step 1 & 2 for the left side. Do not fully tighten the screws of upright 2.

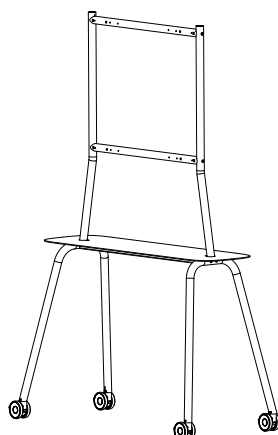
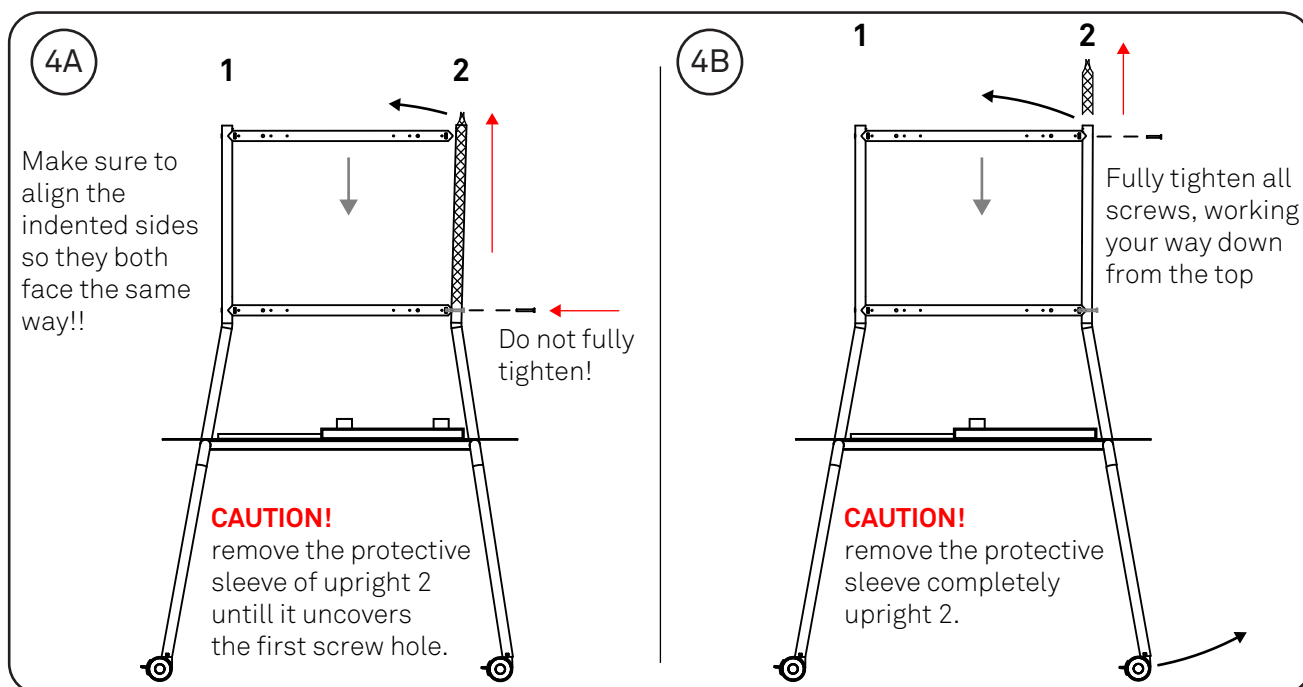
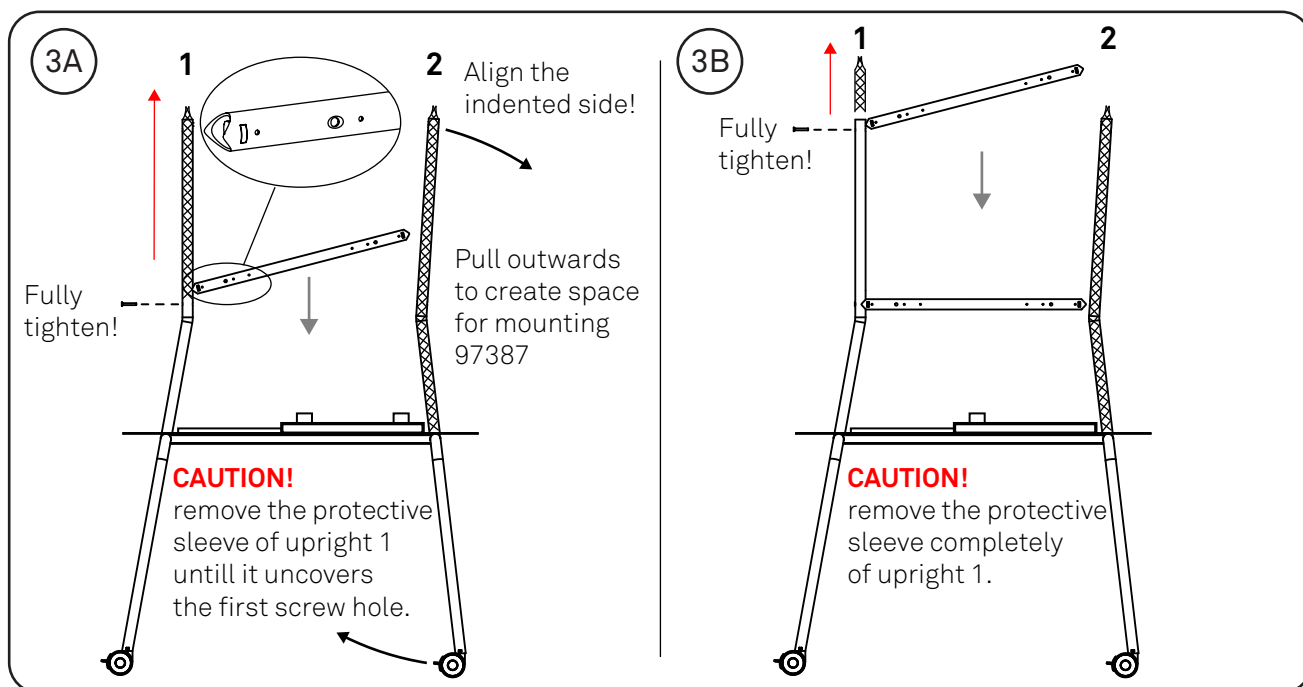
Check if the brakes are applied.

Only tighten the screws on upright number 1



make sure to cover the table top, to prevent scratches when mounting!
For example parts of the packaging.



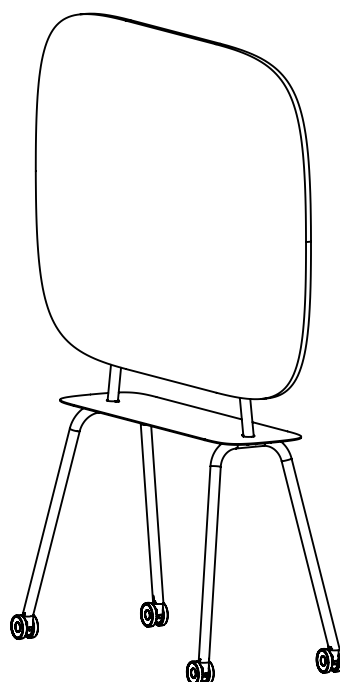
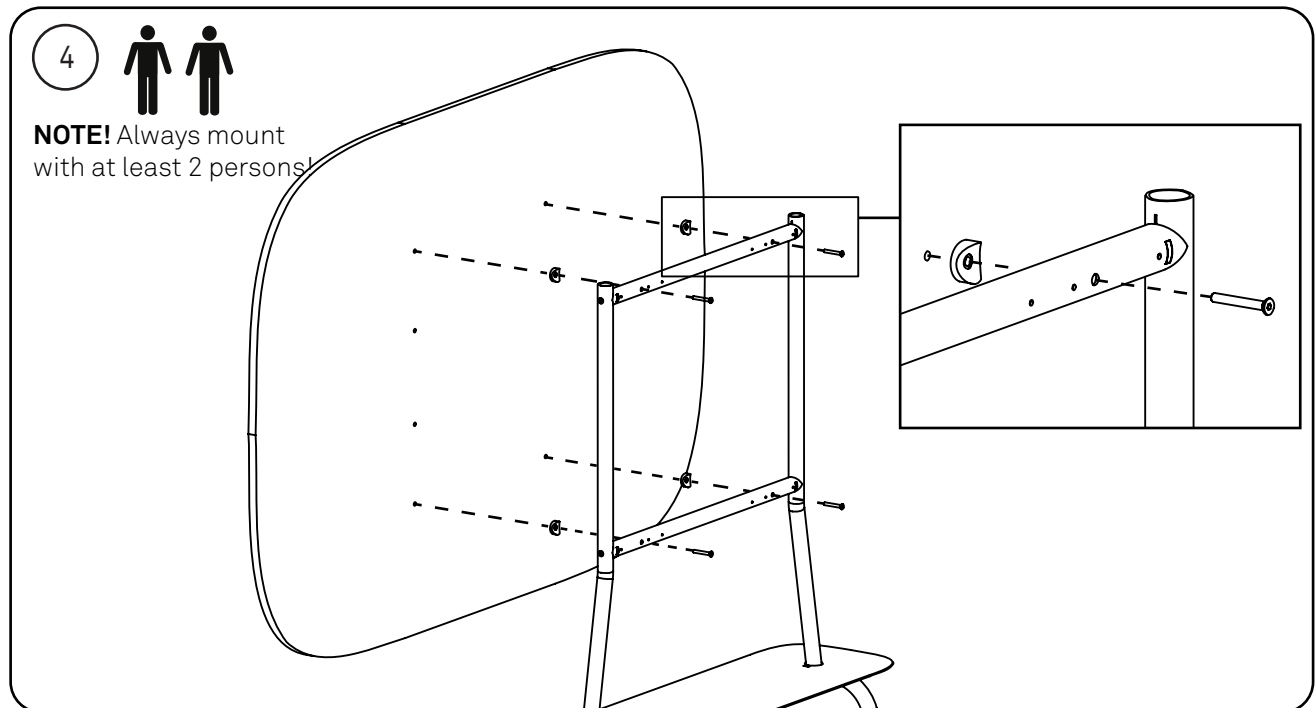
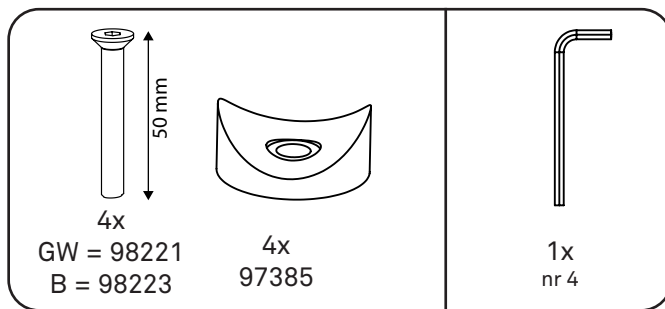


Pully Whiteboard

Landscape

Assembly instruction

Robert Bronwasser



Cascando®